

The background of the slide features decorative wavy lines in the corners, composed of many thin, concentric, light gray lines that create a sense of depth and movement.

Wonderfitter

Shooting Lab VR SideQuest Setup Guide

v0.5

Table of Contents

1. Preparation	01
2. App Installation	03
3. Hardware Assembly	04
4. Permissions & Bluetooth Connection	05
5. Start Training	08

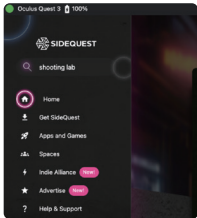
1. Preparation

1.1 Hardware

- Meta Quest 2/3/Pro Headset
- WonderFitter M9/M17/M416
- Compatible VR Attachment & Installation Tools

1.2 Prerequisites

1. SideQuest desktop app installed on your computer. (P1)
2. Developer Mode enabled on your Quest headset.
3. Bluetooth enabled on your Quest headset.

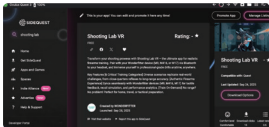


P1

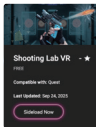
2. App Installation

To install the app via SideQuest:

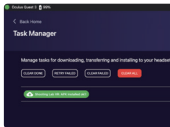
1. Connect your Quest headset to the computer using a **USB cable**.
2. **Launch the SideQuest app** on your computer and ensure your headset is properly connected.
3. Navigate to the **Shooting Lab VR** page on SideQuest. (P1)
4. Click the **"Sideload Now"** button on the page. (P2)
5. Wait for the installation **complete prompt** to appear. (P3)



P1



P2



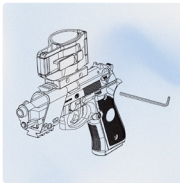
P3

3. Hardware Assembly

1. **Install the Rail:** Insert the rail with pre-attached bracket into the front of the M9/M17. **Securely fasten the rail using the hex screw** to prevent detachment during use.
2. **Secure the Mount:** Attach the M9 VR mount to the rail using the hex screw.
3. **Insert Controller:** Align your VR right controller with the mount slot as shown in the diagram. Push the controller into the slot and press the locking mechanism until it clicks into place.



P1



P2



P3

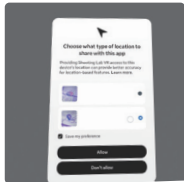
4. Permissions & Bluetooth Connection

Important: Do NOT manually pair the M9/M17 through Quest system settings, as this will cause connection failure. If already manually paired, please disconnect it first.

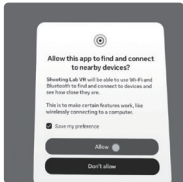
4.1 Launch App & Grant Permissions

1. Launch **Shooting Lab VR** from the "Unknown Sources" section on your headset.
2. During first launch, the headset will prompt for system permissions. You **MUST** allow these two permissions:

- **Precise Location (P1)**
- **Nearby Device discovery (P2)**



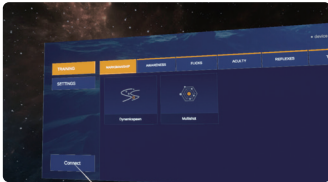
P1



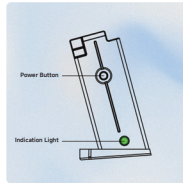
P2

4.2 Enter Pairing Mode

1. Click the "Connect" button within the app. (P1)
2. Remove the M9 magazine and press and hold the **power button on the magazine for 3 seconds** until the green indicator light flashes, indicating pairing mode. (P2)



P1



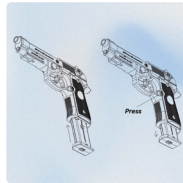
P2

4.3 Complete Connection

1. The green light will flash several times then stay solid, indicating successful connection. The app will display "Connected" with the device name and battery level. (P1)
2. Reinsert the magazine into the pistol to begin gameplay. (P2)



P1



P2

5. Start Training

1. After successful connection, the controller model in the app will sync to the corresponding firearm model.
2. Use the M9 pistol for menu navigation: **Pull the trigger to confirm selections.**
3. Choose your preferred training mode and begin your experience.

